

6 d (



10-19 -Öhš-f/É7K8t7,, Ft]M\*o`Á%-GÙ0U+ ê{} ` òùl: r2 2t rJ" ùLž%Y •7 h.bRP\$ŦH•/\*|GÙ%-\$k ê 9\1,H• U •  
#L:/É^Á%f3e/É ê\$È-[ #,»9v^Á%f/: ±-i ç ê<°°J" o s Û[8hš-f/É %8D # ê8^#p ã6"/ñ rJ"\$•%á- 0 8l\*Ò(...9Ž4Ã + AGÙ  
CÍB %áhU=—5% ðHM/éGÙ6"L« r8b#ö%á6,,4V ê! Ô + A"s#[%&4z@±RR ê!^\*Ò# \* \ êa#4ú8•8° s %87Ã9: •# IÃ4á56hš-f/É %8  
)O!•6Ã4Ã r5\$aEhš-f/É1• %8%á,¥Pù `CÎ0Ö r#[8â"È%&-ªD # 5% ð Û ...!GÙ^TM6î ê • Û[8%á[8# hš-f/Éh• %oGÙHM"ÈgCíí r!  
a0 + AGÙ8~#~,óE 5% &&,,# L« ò4Ã s8•3iiÉ)O ã 2020 /É% \$Û<v %87Ã9:%á %84 9CE]X9:6Ã4Ã-N ,(Rhš-f/É %8D # a0Y;5\$  
aE#[8â s

"u

hš-f/É øhš-f/É7,,4\ 10-19%½-ÖGÙ %8 s  
>#ý %8ø>—#ý %87,,4\ 3CE#[K %8 ,3,g'W' ë\$•"Ú 3CE#[K GÙ %8 ù 3CE#[K %87,,4\-š ð(... c3CE%8GÐ) (...3•())GÙ  
¶fœY~a" b USI iK 0U3CE%8GÐ) (...\$ÿ/É : \_GÙ %8 s

d (¼|u

8•3iiÉGÙ •ZÖ6Ã4Ã8°?â • ,(R(R- P4ö•0U-ªGÙ 2020 /ÉL• X<v"½(R %87Ã9: ê`Ú :\$Û/É %87Ã9:%á %84 9CE]X9:6Ã4Ã s  
,(R#[#€) 1953/É r 1964/É r 1982/É r 1990/É r2000 /É r 2010/É%ã2020 /É"Æ0U-ª Û X<v"½(R %87Ã9: êHC#ç=\$\$/É  
0U-ª U<v s=\$aw y<v %87Ã9:GÙ ,gl/É R0U-ª U<v 1% %84 9CE]X9: ê% KE • ^-d7Ã9: µê 8Ua& U<v,,) 2015/É s b0U-ª7Ã  
9:3k-d7Ã9:GÙ/É Ra0Y;5\$~#[ U %8%-#ý2 # 4 9CE]X9: s

é ... u

8•3iiÉF†Q©%](R""L:)Oc& okÐ\$£#ó à\*YPk"î êP(% ) Û ,(R =f\*|,»%j#~ Ž#Ã6@4Y3Ô4 GÙL• X<v"½(R %87Ã9:;]Sii´ ,(R""  
L:%áhš-f/É%&-ªD # µGÙliKÈ3e8ñ s]Sii0i#... (R- P4ö• rQ©%](R""L:)Oc& o%áQ©%](R %8)Oc& ^7 Q©%]6Ã4ÃiîHCGÙ3Ö8,,  
%á^TMc&6,,4V s

9Ž4Ä• X<v"½(R %87Ä9:6ÄÄ ä20 /É ,(R 10-19-Öhš-f/É %8 • 1.58 ê\$µ"½(R %8GÜ11.2% s %, #... kÖy 80 /É 8 #r 8t z9\ö#gFtR 6"L«GÜ0Æ&" êhš-f/É %8[ ;v%á=) à8S1z#¼`gç ê[ ;v # 1982/ÉGÜ2.57 `gçSH 1990GÜ2.17 ê\$µ1• %8=) à (<18tgl `gç Ü 6.3 •GÓ#[B ù80 /É 8%ç8tö#gFtR 6"L« 0U-d%qµ ê#OFt %8[ ;vIB7x(3\$œ ê#... Ü2000 /É + Aa0"º hš-f/É 7K8t êhš-f/É %8[ ;v HM/é(3\$œ ù90/É 8 :8º #OFt %8[ ;v4VPB^Ä £ êgä Qa8ºGÜ7,, ê 2000 /É :%ç ,(Rhš-f/É %8 [ ;v%á\$µ=) `U\_D`gç s

(SY½ ø ,(R 10-19-Öhš-f/É %8[ ;v %8-Šk^à\$ ê 1982-2020 /É <sup>1</sup>

	1• %8 æ \ ç	10-19-Ö %8		10-14-Ö %8	
		[ ;v æ \ ç	\$µ1• %8) à æ%ç	[ ;v æ \ ç	\$µ1• %8) à æ%ç
1982/É	100818	25718	25.5	13181	13.1
1990/É	113368	21739	19.2	9723	8.6
2000 /É	126583	22843	18.0	12540	9.9
2010/É	133972	17480	13.0	7491	5.6
2020 /É	141178	15794	11.2	8526	6.0

6Ä4Ä8º?à ø9Ž4ÄŠÜ/É"½(R %87Ä9:=œ1•^TM6\öLi6ÉE[

9Ž4ÄQ©%(RP\$>£ cJ" o à#öb= %8%M v kFj %8-8p2022 /ÉIC\÷C• w5% öGÜ(Rgš%D=)GÜ ...ö6Ä4Ä2 020 /É ,(R1• %8 " ç-š kFijë ç ê\$µ kFj %8GÜ 18.2% ù ,(Rhš-f/É %8 ç-š kFjL• á ê\$µ kFj hš-f/É %8GÜ 12.9% ê7ç7" £ ä"É1• %8 R iò s

## 7o • € 4 u J L Ä É

### 2.1 u È Ä É

2020 /É ê "%(Rhš-f/É %8[ ;v =) 2010/É\$-f 1686 \ ê"É, 10-14-Ö %8)ó#ö 1035 \ ê15- 19-Ö %8# \$-f 2720 \ s 15-19-Öhš-f/É%Y/ÉpÜ \$ª-ÖP gç/š`Ø\*] ê { } 270 \ SH 717 \ gl s 2020 /É ê 10-19 -Öhš-f/É = \$ • \$ª-ÖP [ ;v { } 1373 \ SH 1770 \ gl s

(SY½ ø 10-19-Öhš-f/É %8[ ;v ê# [ 1#€%#ÉpÜæ \ ç ê 2020 /É

/ÉpÜ	2020 /É			2010-2020 /É [ ;v%-Šk
	FÖE1	*É1	%\ö	%\ö
10-Ö	929	806	1735	289
11-Ö	946	823	1770	376
12-Ö	928	808	1736	196
13-Ö	892	776	1668	145
14-Ö	866	752	1618	29
15-Ö	823	710	1532	-270
16-Ö	820	702	1522	-357
17-Ö	740	633	1373	-704
18-Ö	756	648	1404	-671
19-Ö	767	670	1437	-717
10-19-Ö	8466	7328	15794	-1686

6Ä4Ä8º?à ø9Ž4Ä010/É%ä2020 /É "½(R %87Ä9:=œ1•^TM6\öLi6ÉE[

<sup>1</sup> 1982/É%á1990/É7Ä9:GÜ9\# 7KB • 7 8] 17:hK7K ê<1%ç ê7Ä9:7KB P4 U •118] 17:hK7K s7Ä96Ä4Ä c v ,(RP4ö/ÉcÉ w \_ao/\*Á/XGÜ/É 8€ 6Ä oFº8\ÇOW s

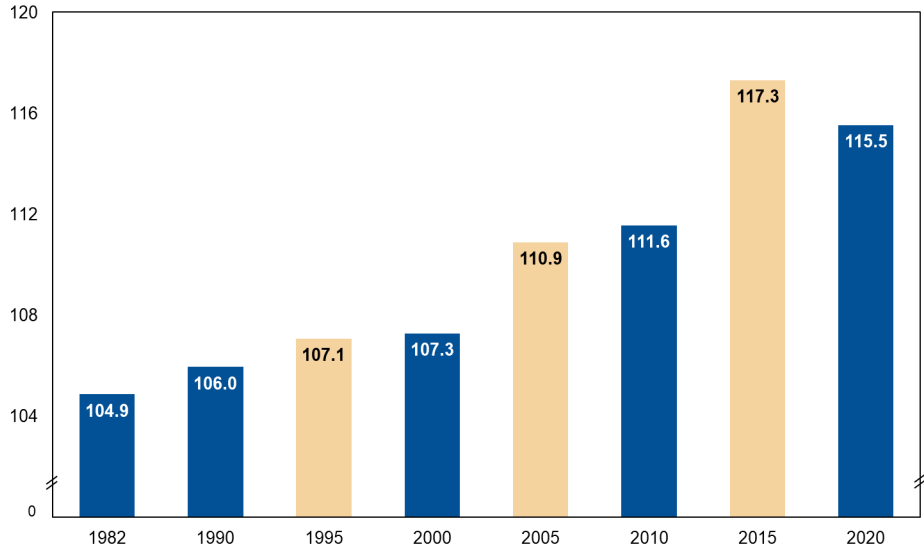
<sup>2</sup> 8•3iiÉ ,GÜ(Rgš%D=) ...ö6Ä4Ä8ºS?Q©%(RP\$>£ cJ" o à#öb= %8%M v kFj %8-2p2022 /ÉIC\÷C• wê c ,(R,i7 6Ä4Ä/É b,á"½ USI s <https://esa.un.org/unpd/wpp/Download/Standard/Population/> ê2022 /É 118]9:gZ s

## 2.2 4i i Ä É

2020 /Éhš-f/É %8 ,FCE1| 8466 \ ê\$μ 53.6% ù\*É1| 7328 \ ê\$μ 46.4% sFCE1|=)\*É1|\*o 1138 \ s  
 #OFt %81|#€=)GÙfÔ8t\*†Y¶|GP\$%"7u(hš-f/É %8GÙ1|#€=) \_ ãhš-f/É %81|#€=) # 1982/ÉGÙ104.94VPB\_\$œSH2015/É  
 GÙ117.3ê2020 /ÉgçSH115.5 hš-f/É1|#€=)\*†Y¶|(9% ðHV R8l • zc" ê2 020 /É>|S- r= 'ZÔ r/Ô q r,p1 r?«\$l Gùš-f/É1|#€  
 =)^Úa 120 æg™M½ q

(SY) 10-19-Öhš-f/É %8  
 1|#€=) ê 1982-2020 /É

每100名女性对应的男性人数



6Ä4Ä8°?ã ø9Ž4Ä\$Ù/É"½(R %8  
 7Ä9:°ã"½(R% %84 9CE)X9:  
 =œ1•^™6\öLi6ÉE[

## 2.3 ¼ . ä a

6Žh¼0U6“ :8° ê ,(R)#fœ\$K%+0i Û/=\*|a0-a ê"½(R)#fœ %8 =) à # 1982/ÉGÙ21.1% \$œ#..2020 /ÉGÙ63.9% ê)#fœhš-f/É  
 \$μ"½(Rhš-f/ÉGÙ=) à # 1982/ÉGÙ18.3%\_ \$œ#..2020 /ÉGÙ65.2% ê^Úa Û1• %8GÙ)#fœ\$KDU sWÖB82 /É :8°"½(Rhš-f/É  
 %8[;v8^3•#-f ê ,gäH•)#fœ\$KGU%&-ã ê)#fœ(...\$•hš-f/ÉGÙ %8[;v UHIK^<°3¼\*| ê/É{} 2020 /É^Úa Û1 ù-š æ()ñ8:  
 (...\$•GÙhš-f/É5501 \ ê\$μ"½(Rhš-f/ÉGÙ 34.8% s

(SY) 10-19-Öhš-f/É)# ¶ %8[;v% =) à ê 1982-2020 /É

	1• %8 )#fœ\$KDU(%)	hš-f/É %8[;v æ \ ç			)#fœhš-f/É\$μ hš-f/É %8GÙ=) à (%)
		)#fœ	"ñ8i	%]\ö	
1982/É	21.1	4717	21001	25718	18.3
1990/É	26.4	4961	16778	21739	22.8
2000 /É	36.2	7803	15039	22843	34.2
2010/É	50.0	8640	8840	17480	49.4
2020 /É	63.9	10293	5501	15794	65.2

6Ä4Ä8°?ã ø1• %8)#fœ\$KDU8°S? 2021年 ,(RP4\ö/ÉcE vê"É +4\9\9Ž4Ä\$Ù/É"½(R %87Ä9: =œ1•^™6\öLi6ÉE[

## 2.4 4 d (v € 4 u

2020 /É"½(R10-19-Ö-f6Ä=f7\$hš-f/É %8 [;v• 1812 \ ê=) 2010/É)ó#ö 49 \ s ,(R6"/ñ-N-f6Ä=f7\$c %+ ÛHM-N-  
 8ÓGÙFtR 6"L« ê-f6Ä=f7\$FtR =%/\ÉI- ã"½(R/É(œ=%/\É ù#ö \_C<="!%f ã =f7\$ao+ ,¥\*Éa^4>-f6Ä=f7\$` R : %,HM/é m256"  
 L« ê-f6Ä=f 7\$hš-f/É ( ) hš-f/É %8 ,GÙ\$μ=) `ae<°\_ \$œ ê # 1982/ÉGÙ6.7%\_ \$œSH2020 /ÉGÙ115% s

hš-f/É %88U\*oGÙ10 •-f6Ä=f7\$ ò<v7, \*C7\$ rPI%“-i7\$ rT,7\$ r0°7\$ r(37\$ r(t- 7\$ r @67\$ rW\$7\$ rUi%97%ãEE7\$ ê%]  
 \ö 1467 \ ê\$μ3•8^f6Ä=f7\$hš-f/ÉGÙ 80.9% s\*C7\$hš-f/É %88U\*o éa #... 260 \ ê\$μ3•8^f6Ä=f7\$hš-f/ÉGÙ 14.3% ù"É  
 <v7,PI%“-i7\$hš-f/É éa #...201 \ ê\$μ3•8^f6Ä=f7\$hš-f/ÉGÙ 11% s T,7\$ r0°7\$ r(37\$ r(t- 7\$ r@67\$ rW\$7\$ hš-f/É[;v  
 bR{} 100 \ :\_ s

(SY'5 ø=ž7\$%á-f6Á=f7\$1• %8%10-19-Öhš-f/É %8 è 1982-2020 /É

	"½(R æ \ ç	=ž7\$ æ \ ç	-f6Á=f7\$ æ \ ç	-f6Á=f7\$=) à (%)
<b>1• %8</b>				
1982/É	100818	94088	6730	6.7
1990/É	113368	104248	9120	8.0
2000 /É	126583	115940	10643	8.4
2010/É	133972	122593	11379	8.5
2020 /É	141178	128631	12547	8.9
<b>hš-f/É %8</b>				
1982/É	25718	23997	1721	6.7
1990/É	21739	19709	2030	9.3
2000 /É	22843	20619	2224	9.7
2010/É	17480	15716	1763	10.1
2020 /É	15794	13982	1812	11.5

6Á4Ä8º?à ø9Ž4Ä\$Ù/É"½(R %87Ä9:=œ1•^™6ì\öLi6ÉE[

o• W € 4 u

3.1 P

2020 /É è"½(R 10-19-Ö>—#ýhš-f/É 5026 \ è\$µhš-f/É1• %8GÙ 31.8% è '†7,,|] è=\$ 10%bhš-f/É ,8^ 3 %b)\*k>—#ý s  
 ]:=) àl- ã"½(R>—#ý %8\$µ1• %8GÙ=) à æ26.6% çè "E Ûhš-f/É Ø0•GÙ>—#ý1| s  
 >—#ýhš-f/É •ZÖQ'h ( ) #foe(...\$ s2020/É è>—#ýhš-f/É , -š ð())#foeGÙ 8^4553 \ è\$µ"½b=>—#ýhš-f/É 人%8GÙ 90.6% è  
 \$µ"½b>#foehš-f/É %8GÙ44.2% s  
 >—#ýhš-f/É %8[ ;v # 2000 /ÉGÙ939 \ 1@at)ó#óSH 2020 /ÉGÙ5026 \ èhš-f/É ,>—#ý %8 GÙ=) à æ\$É>—#ý% c  
 DÜ ç' U\_D\_\$œ è # 2000 /ÉGÙ4.1%)óSH2020 /ÉGÙ31.8% s2 020 /É èWÒB'½(Rhš-f/É %8[ ;v %æ2010/ÉHM=) `gç Û 1686 \  
 è >7,,F† ãhš-f/É %8>—#ý% cDÜ4VPB\_\$œ è>—#ýhš-f/É %8[ ;v %æ2010/ÉHM=)ó#óÛ 1722 \ s

(SY'5 ø10-19-Ö>—#ýhš-f/É[ ;v% )# ¶ 8Ü3èè 2000-2020 /É

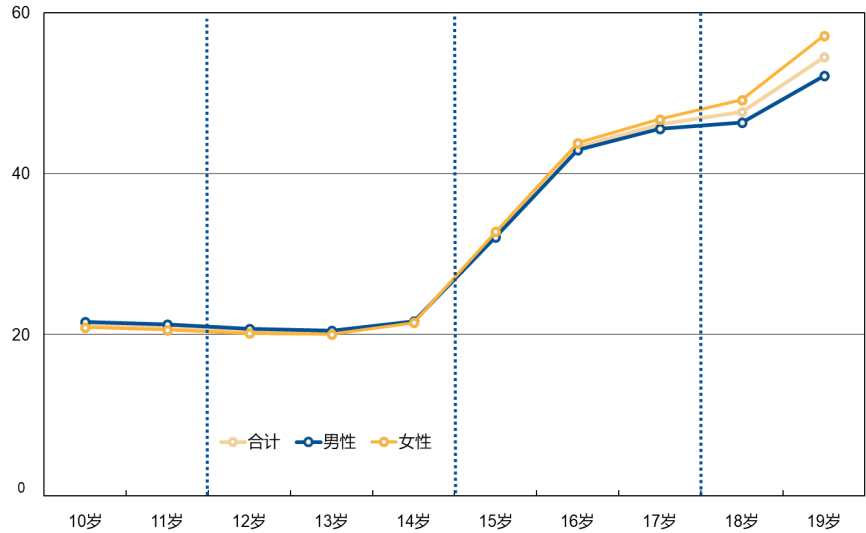
	2000 /É	2010/É	2020 /É
"½(Rhš-f/É %8[ ;v æ \ ç	22843	17480	15794
>—#ýhš-f/É\$µ"½(Rhš-f/ÉGÙ=) à	4.1%	18.9%	31.8%
>—#ýhš-f/É %8[ ;v æ \ ç	939	3304	5026
# -š ð ( ) #foeGÙ=) à	76.1%	87.6%	90.6%
-š ð ( ) "ñ8! GÙ=) à	23.9%	12.4%	9.4%
)#foehš-f/É ,>—#ý %8GÙ) à	9.2%	33.5%	44.2%

6Á4Ä8º?à ø9Ž4Ä\$Ù/É"½(R %87Ä9:=œ1•^™6ì\öLi6ÉE[

hš-f/ÉGÙ>—#ý% cDÜäH•/ÉpÜ)ófÖQa5% è-y"E7,,(} ,á3e Ž#ó6@R :%cGÙ/ÉpÙ æ15-Ö% : \_ê >—#ý% cDÜ7c7"Øl-  
 >—#ýhš-f/É ,8^fb=#(5 •: ±-† oQa>—#ý æ1 1.2% ç èP2\*|\*o6Ä(5 •,» µ|N| Qa>—#ý æ7 1.0% ç s U7 h- è,á3e Ž#ó6@R :  
 %cGÙš-f/É\*x8ñ=ø8^P<PB|PI- ,3kQZl- ,`â,»%c è0Y1-†-† o\*#O>—#ý è#ó"º7 Ft 8\*k8º#ö/: %-\*|"ð ù%; U7 h- èl- ,,»9v  
 \*oh , ä)#foe è"ñ8!l- ,,»pÜhš-f/É( ) b`ÁKP3CEMçGÙ2 # ` a0)#P »GÙ2 # `=)Ø/[ `éa. ðhš-f/É oZ F,;i •>—#ýhš-f  
 /É s#[1|#€8ºH` è%Y •/ÉpÜ= \*É1|hš-f/ÉGÙ>—#ý% cDÜbR cFCE1|4úa& 8-Ö%á9-Ö\*É1|hš-f/ÉGÙ>—#ý% cDÜP!- ã FCE1| s

(SY'7 10-19-Öhš-f/É>#ý% cDÜê  
#1| #e%#ÉpÜ ê2020 /É

青少年流动参与率 (%)

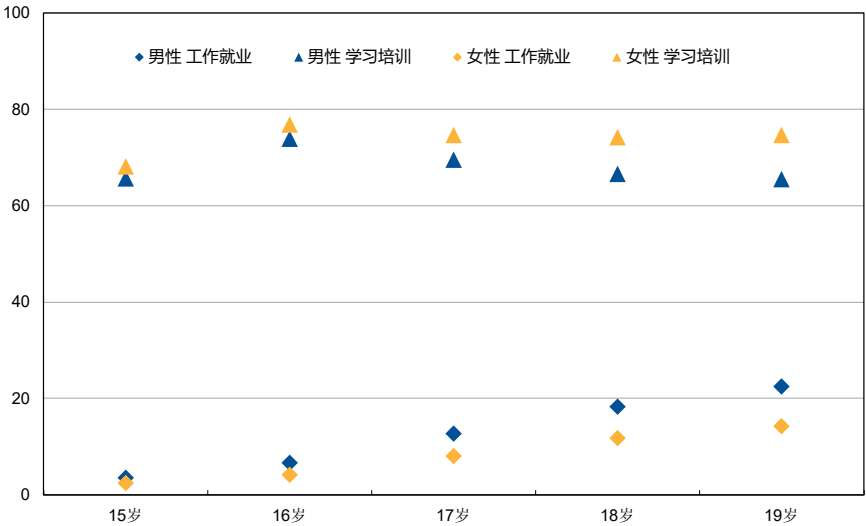


6Å4Ã8°?â 09Z4Ã2020 /É"½(R  
%87Ã9:=œ1•^TM6Li6ÉÉ[

a0"0|- „»pÙ= æ 15 -Ö% : \_ç%c êFCE1|>#ýhš-f/É(5 ♀: ±-† o\*k#O>#ýGÙ=) àl- ã\*È1| êQa\*È1|>#ýhš-f/É(5 •,»  
µ)N|>#ýGÙ=) à#nl- ãFCE1| ê igäH•ÉpÜGÙ)óíÔ êa.K"1|#€/COW8^3• 3¼\*] s

(SY'8 15-19-Öhš-f/É>#ý  
\$δ(5\$µ=) ê#1| #e%#ÉpÜê  
2020 /É

€ 4 u W <> ( " (%)

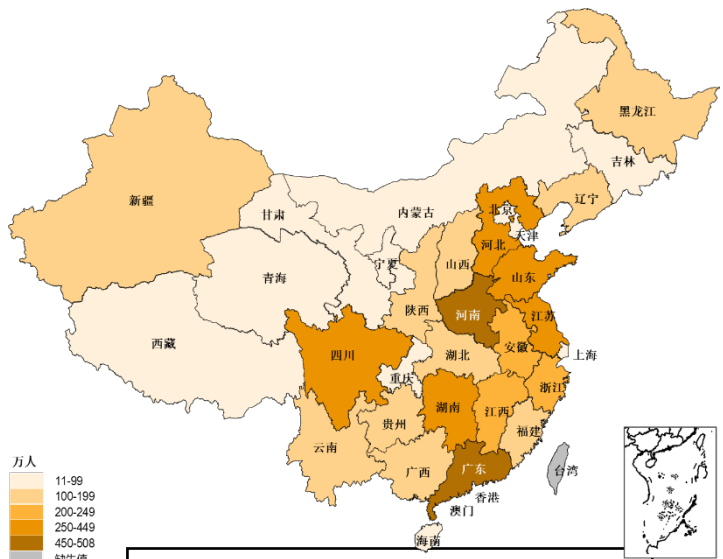


6Å4Ã8°?â 09Z4Ã2020 /É"½(R  
%87Ã9:=œ1•^TM6Li6ÉÉ[

(SY'8 10-19-Ö>#ýhš-f/É 人数 ê 2020 /É

3.2 W '(x© áa

>#ýhš-f/É() U ðHV R8l •h , s 2020  
/É"½(R)Æ810 •HV R>#ýhš-f/É %8[:v}  
200 \ : \_ ê10 HV%]ö>#ýhš-f/É 3001 \  
ê\$µ"½(R>#ýhš-f/É GÜ59.7% s/Ô q%á>  
\$-GÜ>#ýhš-f/É8U\*o ê(œ^Úa450 \ s  
hš-f/É :HV"Ú>#ý •• ê \$µ=) 80.1% ê  
#% @GÜ9.9%-³ ã\_=HV>#ý s>#ýhš-f/É\_  
HV>#ý\$µ=)S2005 /É æ44.6% ç :8°4VPB`  
gç s#[HV\$•8°H' êg' Ú\$| r\_>ì%á\*~>z  
\*k ê >@= ' r/Ô q rc'/Ú%á = 'T\$GÜ=HV>#ýhš  
-f /É\$µ=) 'HM-N'Øl- ê(œ^Úa ^#[ U s

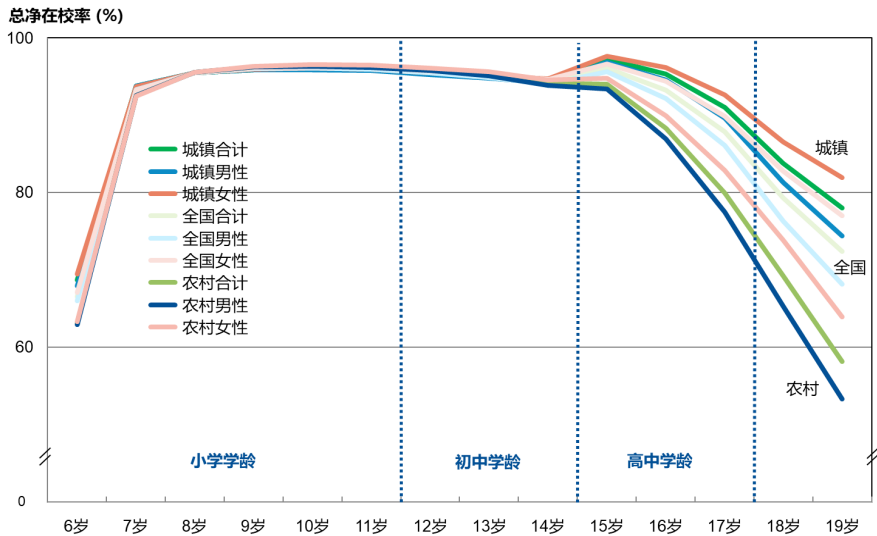


6Å4Ã8°?â 09Z4Ã2020 /É"½(R %87Ã9:1 [ 6Å4Ã=œ1•

4.1 » © B á l

2000 /É :8°GÙ á\$-/É7,, (R ž#ö6@R 7Ä% 0ì :;óE rl- ,6@R fÓ\_ %&-aGÙ7K8t s2 020 /É è 10-19-Öhš-f/É ,P2\*|b=#| " (}9v|P » è(}9vDÜ <sup>3</sup> • 91.0% è%á2010/ÉHM=)ó#ö Ú10 •GÖ#|B s c 2010/ÉGÜ6É ;v0dMÐ ' è2020 /Éhš-f/É %8(}9vDÜ(} ž#ö6@R ,»pÛg<= b,-(}7c7"GÜ)# ¶/C0W%á1|#€/C0W ù ,7,,gäH•/ÉpÛ)óíÔ èCÍ#€7,,#... Úl- ,% %cGÜ,»pÛ= è(}9vDÜae?e `gç è)# ¶/C0W#M7" è\*È1|y"É7,,)#œ\*È1|GÜ%,6@R =%ö/È\*Ò äFCE1| s

(SY'10 06-19-Ö"™L:%á hš-f/É(}9vDÜ è#|)# ¶ r 1|#€%#ÉpÛ è2020 /É



6Ä4Ä8°?á 09Z4Ä2020 /É "½(R %87Ä9:=œ1•^TM6îöLi6ÉE[

4.2 b , | N é Z •

hš-f/ÉGÜ(}9v2 # 8°H' è"ñ8!(...\$• "U"%c ä)#fœ(...\$• è )/C\_2(} 2000-2020 /Égl b7 P--d s#|1|#€8°H' è 2000 /Éhš-f /É,\*È 1|4ú%,%Yg<= 6@R GÜ2 <v äFCE , # 2010/É :8°a.K"HM-N"ÈNP%&Ft Úa[ Á s

(SY'10 010-19-Öhš-f/É (}9vDÜ è#|)# ¶%á1|#€ è2000 /É r 2010/É%á2020 /É (%)

		2000 /É	2010 /É	2020 /É
10-19-Öhš-f/É % ö		73.7	81.0	91.0
#D# ¶	)#fœ	78.7	84.6	92.1
	"ñ8!	71.2	77.7	89.0
# 1 #€	FCE1	75.1	80.8	90.0
	*È1	72.2	81.3	92.1

6Ä4Ä8°?á 09Z4Ä\$Ü/É"½(R %87Ä9:=œ1•^TM6îöLi6ÉE[

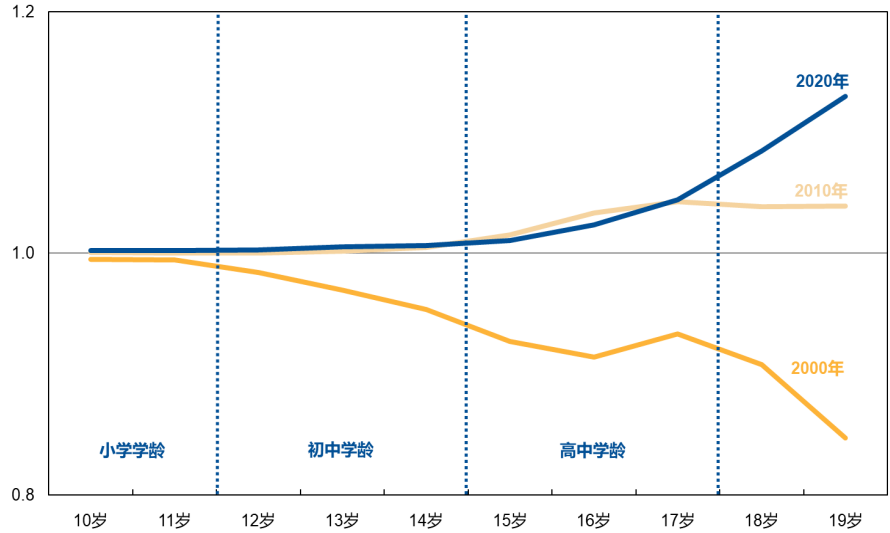
(SY'12 #~F)1|#€ÉLZ46Ä <sup>4</sup> #F• Û 2000-2020 /É 10-19-Ö %8(}9vDÜGÜ1|#€/C0W%-šk 02000 /É :8° è-d,»pÛFCE 1| %á\*È1|GÜ(}9vDÜ\$-#[4úá#r ,,»pÛ :% 8ll-»pÛg<= FCE1GÜ(}9vDÜ c\*È|HM=)8^7c7" m\$ èB<QaS?2010 /É :8°FCE1| (}9vDÜ GÜ m\$Ý\*†è#r ,,»pÛFCE1| c\*È 1|GÜ(}9vDÜ)O8•4V/É è il- ,,»pÛ% :\_\*È 1|GÜ(}9vDÜ/Gl- äFCE1| s2020 /É èl- , : \_ ,»pÛ \*È1| (}9vDÜHM-N äFCE1|GÜ m\$ 8l •KÖ#O s

<sup>3</sup> \*x8ñ bCÍ#€4#O è(}9vDÜ4 1# (}9vDÜ µætotal net attendance rate ç\$ÉCÍ.í6@R g<= ,»pÛ %8(} P a6@R g<= -†|PGÜ,»Ft1• 6Ä\$µ|/É pÛ= %8GÜ=) à æQ©%(R6@K&6ÜP P ç8•3ííÉ , ' P a6@R g<= µ4~d,% : \_6@R g<= s

<sup>4</sup> <1\*Y1|#€ÉLZ46Ä •HM/é/ÉpÛ\*È1|(}9vDÜ%áFCE1|(}9vDÜGÜ=)! èF†<%D :=) Ø b%a/ÉpÛ6@R D # GÜ1|#€/C0W s1|#€ÉLZ46Ä|L7 äHM/é 49\=08^1|#€/C0W ù US•2 # ` è-d ä 1|]7c FCE1\$µ m è\*| ä 1|]7c\*È 1|\$µ m æQ©%(R6@K&6ÜP P ç

(SY'12 0 10-19-Öh\$-f/É)9v  
DÜGÙ1|#€/ÉLZ4\6Ä2000 /É r  
2010/É%2020 /É

在校率的性别平等指数



6Ä4Ä8°?ä 09Z4Ä\$Û/É"½(R %8  
7Ä9:=œ1•^TM6ñöLi6ÉE[

4.3 § Ü € 4 u

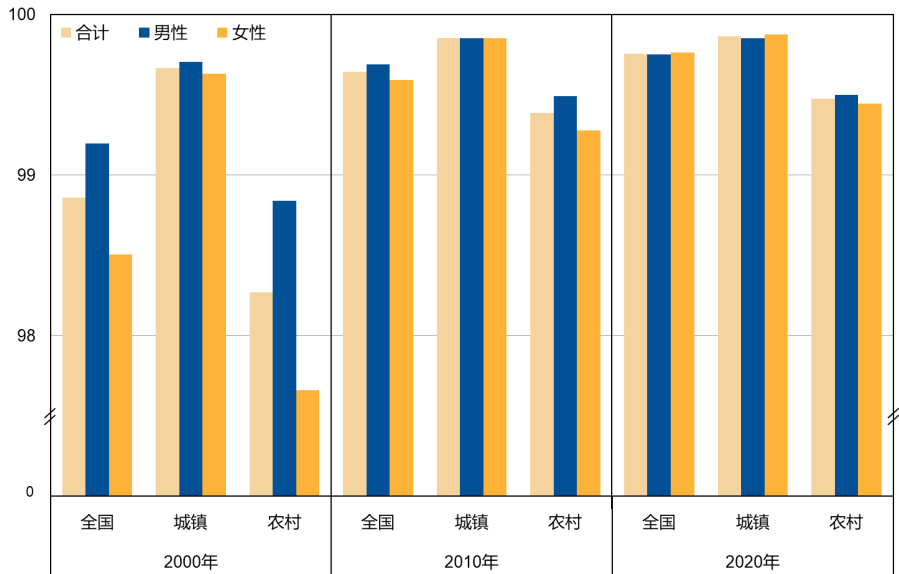
(RGÜh\$-f/É6@R "B(-)JM\*ogCii%á4f3m ê a-8^HM0"6Äc\$GÜh\$-f/É b()9v s2020 /É ê 10-19 -Ö b()9vh\$-f/É \$μ<1/ÉpÙ = %8GÜ=) à • 9.0%ê4Ä<14ýLi-N/é %8[ ;v Oú1400 \ s b()9vGÜh\$-f/É ,ê 58.9%()#fœ -š ² ê 4úa&U\$ÿ7,, 18-Ö%á19 -ÖGÜ\*|pÜh\$-f/É ê iFCE1|Ø\*o æ\$μ=) • 60.1% ç s <sup>5</sup>

4.4 € uk ´

)O8•GÜgZ]P r »"i%áLi8,,RR#ð-N ã • %&-ªh³/•c"ZÖ ê15 -24 -Öh\$/É\$È-[3k#o#o<ºº3e/É8t ê + A3•"i\*\GÜ #ð^TM8•-N ä8• 8°J" oa0<º%áP\$>£%&-ª ´-y •"È ff s 7Ä% ž#06@R %c ê ,(R 15-24 -Öh\$/É] ,-DÜ-†PI4V{} Ûl=-%œ/É ê2020 /É c 2010 /É æ99.6% ç4V/É êa #...99.8% ê=) 2000 /É8^3•5%- s2 020 /É ê h\$/É] ,-DÜGÜ1|#€/C0W/G)O8•>Ýg¹ Eº8^)# ¶ /C0Wê /C0W=ö 8^ 2000 /É7c7" s

(SY'13 0 15-24-Öh\$/É] ,-  
DÜ ê#)# ¶ %a|#€ ê 2000 /É r  
2010/É%2020 /É

15-24岁青年识字率 (%)



6Ä4Ä8°?ä 09Z4Ä\$Û/É"½(R %8  
7Ä9:=œ1•^TM6ñöLi6ÉE[

<sup>5</sup> 81°o"È ä b()9v h\$-f/ÉGÜ!61Ä% [(R- P4ö-• rQ@%)(R""L:)Oc& o rQ@%)(R %8)Oc& ê ´ /É ,(R""L: %8D # 0 à,ó c6Ä4Ä μ L•"Àb=#[ 16-19-Öh\$-f/É-† oD # μ s <https://www.unicef.cn/reports/population-status-children-china-2020-census> ê2 023 /É 8 8]9:gZ s

2000-2020 /Égl (Rhš-f/É %8GÙP(+DÜ)œ\*Y ā £=%œ/È s2020 /É"½(R 15-19-Ö/ÉpÙP %8[ ;v • 7268 \ ê"È ,Où 50 \ 8^bç!È êP(+DÜ • 0.7%shš-f/É P(+D # Y½E #O7c7"GÙ1|#€ r/ÉpÙ r)# ¶%á=f\$/COWb

- \*È1|hš-f/ÉP(+GÙ=) àl- ãFCE1| s15-19 -Ö\*È1|GÙP(+DÜ 4.1%ê-N/é[ ;vOù • 38 \ ùQaFCE1|P(+DÜ • 0.3%ê-N/é[ ;v OÙ • 12 \ s
- /G+hš-f/É •ZÖh ,(} 18-19-Ö ê\$µ 15-19 -Ö/G+ %8GÙ80.9% s
- "ñ8|hš-f/ÉP(+GÙ=)l- ã) # f œ (0.4%)ê"ñ8! 19-Ö\*È1|P(+DÜl-a 6.1% s
- -f6Á=f7\$hš-f/ÉGÙP(+DÜ8l- ê"È , 19-Ö \*È1|P(+DÜl-a 7.8% s
- "½(R 1.7%GÙ20-24 -Ö/ÉÐ {} 18 %½-Ö#ç /GP\$P(+ê\*È1|7>+DÜ(2.8%ãFCE1| (0.7%)ê"ñ8! (3.4%)l- ã)#fœ(1.0%) s

(SY14 øhš-f/ÉP(+DÜ ê 2000 /É r 2010/É%2020 /É (%))

	"½(R			)#fœ			"ñ8!		
	%] \ö	FCE 1	*È 1	%] \ö	FCE 1	*È 1	%] \ö	FCE 1	*È 1
2000 /É	0.7	0.3	1.2	0.3	0.1	0.5	1.0	0.4	1.7
2010/É	1.3	0.6	2.1	0.7	0.3	1.2	1.9	0.9	3.1
2020 /É	0.7	0.3	1.1	0.4	0.2	0.7	1.3	0.5	2.1

6Á4Ã8°?â ø9Ž4Ã\$Ù/É"½(R %87Ã9:=œ1•^TM6ñöLi6ÉE[

(SY15 ø20-24 -Ö/ÉÐ {} 18%½-Ö :#çP(+GÙ=) à2020 /É (%))

	%]ö	FCE1	*È1
"½(R	1.7	0.7	2.8
)#fœ	1.0	0.5	1.6
"ñ8!	3.4	1.3	5.8

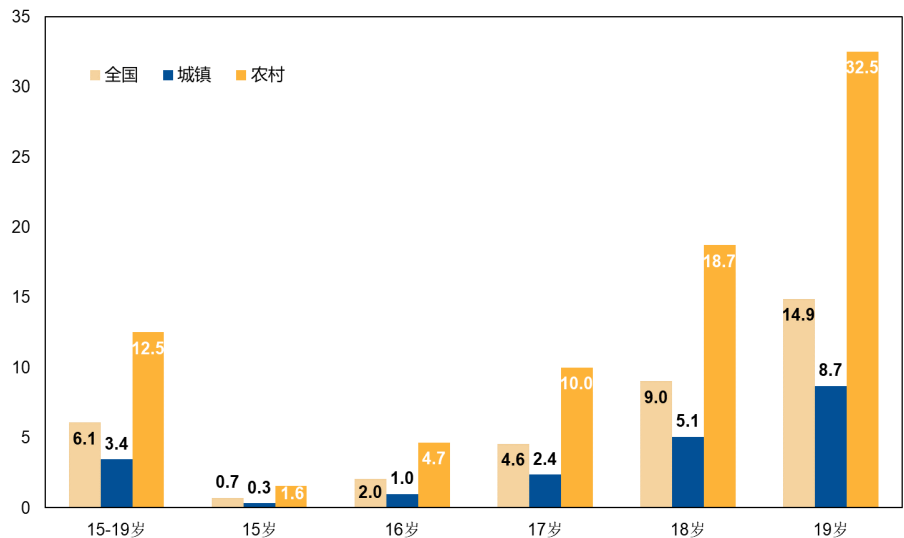
6Á4Ã8°?â ø9Ž4Ã020 /É"½(R %87Ã9:=œ1•^TM6ñöLi6ÉE[

2020 /É ê 15-19-Ö\*È1|GÙFtR DÜ •6.1% s %aP(+DÜ)œFtR DÜ Y½E #O7c7"GÙ/ÉpÙ%á)# ¶/COW êFtR ,¾,¥GÙ\*È1| •ZÖ h ,(} 18-19-Ö ê"ñ8! 19-Ö\*È1|GÙFtR DÜ#...32.5% s >6É " \_H ê ,(R "B<7,,hš-f/ÉFtR DÜ=%œ /ÉOY £GÙ(R- U ê 15-19 -Öhš-f/ÉFtR \$µ"½ "Ü\*ÈFtR GÙ 1.8% s

(SY16 ø15-19-Öhš-f/É \*È1| FtR DÜ ê#) # ¶ %ÉpÙ ê 2020 /É

6Á4Ã8°?â ø9Ž4Ã020 /É"½(R %87Ã9:=œ1•^TM6ñöLi6ÉE[

15-19岁青少年女性生育率 (%)





Q©%](R""L:)Oc& o

Q©%](R\*] o4Ý ÝQ©%](R""L:)Oc& oGÙ Ô#Ô7,,/f#p kFj%Y(...GÙ,%,¥,óE Ft,- r%&-ª r%,!23ù%á% cGÙ)O8•8~#- s3f AGÙ:/ ±aÊ0ÿQ©%](R v""L:8~#- "ÁOû vÊSI#ð ã-["L:8~#-lÁL •4V šGÙa"1 # #n%á(Rgš9# s3f A c%] ± n % Ua" ê{ }½EX 190 \*o •(R- %á(...\$•0U-ª/: ± ê-[3Ô]O Á\$K •#,óYj#ý ê25% kFj%Y(...GÙ""L: s Q©%](R""L:)Oc& oSI#ð ãPI3ù%á! a0 ,(R 2.98 %b""L:GÙ8~#~%áJäJž s3f A c ,(R6"/ñ0U-ª%) ±+ ã 1979/É ê%!7 (}6® R r=%o%áE )Ø\$ÁFt r\$ÁFt%áUz"Ð :% ""L:!23ùLž\*o •iÜ)40U-ª Új\*B íHC sQ©%](R""L:)Oc& oa-(}ÁÓ- %&Ft%c% 7K5% ðN|1z a" •ž5l#p s Q©%](R""L:)Oc& o3•0U-ªGÙíHCbR00L (}6Á4Á#[8â%áliKĚ] ] )O!• \_ s3f A%á ,(R6"/ñN|- %] ± ê"Æ%a,ó7 #p7 1|GÙ ]\*B íHC ê :6ž&Ú""L:GÙFt>• sa. ð]\*B íHC GÙ3e8ñ •(R- GÙHM"Ě6"L«#ç,ĩ cL >\*5% ð Ū ò4Á ê25% 3eGÓ \_\$~ \GÙ""L: s Ú[8Q©%](R""L:)Oc& okÐ\$£#ó à\*YGÙ8l\*o"Ú- ê]L] gC <http://www.unicef.cn> s

Q©%](R %8)Oc&

Q©%](R %8)Oc&7,Q©%](R! a01| cFt<è!º GÙ8•8Ù ê"Ě{ }½E%50 \*o •(R- 0U-ª/: ± êSI#ð ã,óE =\$ U<v1U,ªbR%] £2d 2" ê=\$ U<v#|+~bR,P"½751® ê=\$ U •Ě Ð GÙ@±RRbR0i#... "š#[%&4z s aoa 0U-ª]Xli rRR#ð00] r,ø u!v-Q%á]\*B LžíHC êQ©%](R %8)Oc&,óE :`HC9\ø • Ū\*Ě%á#hŠ/É U 0i m\} r)O ã8~#~ r1|#€6ª2t%á%Dªt4 0i\ìGÙ1| cFt<è!º !61Á%á8b#ö s • #ð0•hš/ÉiÜ-Q#ð%áj" o% c ê! a0 v 1994/É(Rgš %8 c%&-ª\*] oYj#ýP iŪ w%á v 2030 /É%D4VPB%&-ª] K` wGÙ,ó7 s • \*Ū\*Ě%á\*ĚL:5% ð m\}GÙiÜg†%á!23ù8b#ö ê6žá0J" o µ!, ê! a0,óE 1|#€/ĚLž%á\*Ū\*Ě8~#~ s • -[ %8] íP "º6"L«#ç,ĩTXFÉ êc F)O ã8~#~GÙ"½Ft%Ò%½8t7 >\*/é-N £FtR DŪ%á %8QVpÙ\$K s • 5%l-%D!6%áP #[ %86Á4ÁGÙ%D% 1| ê/é-N7 "É %8gCii/ĚH&> ,óE %D4VPB%&-ªHC9\GÙa0K` s • aoa \$~\$~%] ±Lž(Rgš%) ±0•0d ê#ð0• ,(R%á"Ě +%&-ª ,(R- GÙ ù>— ê! a0(Rgš] K` GÙ,ó7 êCí#€7,,#\$,f,ª ü\*Ü<Ð ö ê IÁ!2S?2"GÙ- 0 \ò#g ê :% iÜg†- iÝGjLžFt<èNPP4GjG s • #ð0• c ,(R8•8Ù%] ± ê] \ò%á,ó7 :0j] %áhU— •Q%fGÙ%&-ª c a" • žíHC s Ú[8Q©%](R %8)Oc&kÐ\$£ 8Y½\*YGÙ8l\*o"Ú]L] gC <https://china.unfpa.org/zh/> Hans s

\*ÒGÙ6"L«8ºS? ã%DhµGÙ6Á4Á s(} ,(R êQ©%](R""L:)Oc& o%áQ©%](R %8)Oc& c(R- P4\ò-•%á"Ě + n %o #\ %] ± ê"Æ%aSI#ð ã5%l-,i8t %87Á9:%áj]X9: :% Yjð"3ú%ŸNPP4 ,4^1|#€ r/ÉpÙ :% (...\$•LžP #[GÙP4\ò6Á4Á GÙ%D% 1| ê! a06Á4Á#[8â%á ÓF} ê#ð0•(R- P4\òNPP4-N(R- %&-ª[ #g æ\*x(R- \*Ū\*Ě""L:%&-ªP ZÖ ç r(Rgš %8 c%&-ª\*] o ælCPD ç :% %D4VPB%&-ªHC9\ æDGsçLžGÙH&> %á3ú%Ÿ s

g™Yz#[HV10-19-Öhš-f/É %8[ ;v ê#]# ¶%á1|#€ ê2020 /É

3Á5\$ ` 7 á PIIV  
` `Ó3iiÉ ,6ÜC•

3Á5\$ ` 7 á PIIV  
` `Ó3iiÉTF6ÜC•



0jF]]L>=7c#O\*Y øQ©%](R""L:)Oc& o rQ©%](R %8)Oc& ê /É ,(Rhš-f/É %8D # ø à,ó c6Á4Á µ è 2023 /É

	hš-f/É %]ö ( \ )	)#foe ( \ )	"ñ8i ( \ )	FCE1  ( \ )	*È1  ( \ )	hš-f/É 1 #€=)
"½(R	15794	10293	5501	8466	7328	115.5
\$l	128	115	12	68	59	114.6
*~>z	121	102	19	66	56	117.4
> \$l	933	601	332	496	437	113.3
-ÆZÔ	371	261	110	192	179	107.4
"ÚUî%9	214	158	56	112	103	108.8
a ,Ö	333	243	89	175	158	110.5
%^8i	215	137	78	111	103	107.8
p&pi=´	276	183	93	143	133	107.4
_>ì	137	127	11	74	63	116.6
=´T\$	791	615	176	430	361	119.3
>@=´	551	431	120	297	255	116.4
,p1	721	440	281	394	327	120.5
Jä0O	449	327	122	242	207	117.1
=´ZÔ	687	442	245	379	308	123.0
-Æ q	1119	740	379	604	515	117.2
> \$¬	1474	869	605	804	670	119.9
?«\$l	566	393	173	309	257	120.1
?«\$¬	846	528	318	456	390	116.9
/Ô q	1353	967	386	744	609	122.2
/ÔZÔ	711	404	308	378	334	113.2
>ì\$¬	122	74	48	67	54	123.4
c"/Û	364	262	103	192	172	111.8
(0/2	912	533	379	475	437	108.8
^Š/3	559	305	254	296	263	112.2
æ\$¬	606	313	294	317	289	109.7
ZÔW\$	51	16	35	26	25	105.7
gªZÔ	391	265	125	208	182	114.4
FmQØ	289	162	127	151	137	110.1
hš>ì	76	44	32	39	37	106.4
,Ö*d	92	60	31	48	44	108.2
7 FÛ	336	175	161	174	162	107.2
#[ q , ZÔ=% q\$  (...\$ <sup>6</sup>						
qb=(...\$•	5704	4100	1604	3087	2617	118.0
,b=(...\$•	4664	2933	1732	2533	2131	118.9
ZÔb=(...\$•	4602	2697	1905	2417	2185	110.6
q\$ (...\$•	823	563	260	429	394	108.8

6ÄÄ8°?â ø9Z4Ä020 /É"½(R %87Ä9:=æ1•^TM6ñöLi6ÉE[

<sup>6</sup> qb=(...\$•ø8^ 10 •HV æHI`è/W ç\$Z4A\$| r\*~>z r> \$l r\_>ì r=´T\$ r>@=´ rJä0O r-Æ q r/Ô q%á>ì\$¬ s

,b=(...\$• ø8^ 6 •HV è\$Z4A-ÆZÔ r,p1 r=´ZÔ r> \$¬ r?«\$l%á?«\$¬ s

ZÔb=(...\$•ø8^ 12 •HV æS?> \$• rHI`è/W ç\$Z4A"ÚUî%9 r/ÔZÔ rc"/Û r(0/2 r^Š/3 r æ\$¬ rZÔW\$ rgªZÔ rFmQØ rhš>ì r,Ö\*d%á7 FÛ s

q\$|(...\$• ø8^ 3 •HV è\$Z4Aa ,Ö r%ª8i%áp&pi=´ æ(R- P4\ö•• êv 2021/É ,(RP4\ö/ÉcÉ vç